



ENGINEERING AND ENVIRONMENTAL CONSULTANCY,  
AND TECHNICAL SUPPORT SERVICES

OVER 3500 STAFF **ACROSS 31 COUNTRIES**

(Europe, Africa and the Middle East)

**19 BROAD DISCIPLINES**



Acoustics and air quality  
Agriculture and horticulture  
Asbestos and water hygiene  
Building sciences  
Carbon management and sustainability  
Civil and structural engineering  
Communication services  
Contaminated land assessment and remediation  
Ecology, habitat management, heritage  
and landscape services  
EHS compliance services

Environmental and consents management  
Environmental and social impact assessment, planning  
and design  
Environmental permitting  
Geomatics, geophysics and geotechnical engineering  
Laboratory testing  
Radiological services  
Site investigation  
Software consultancy  
Training

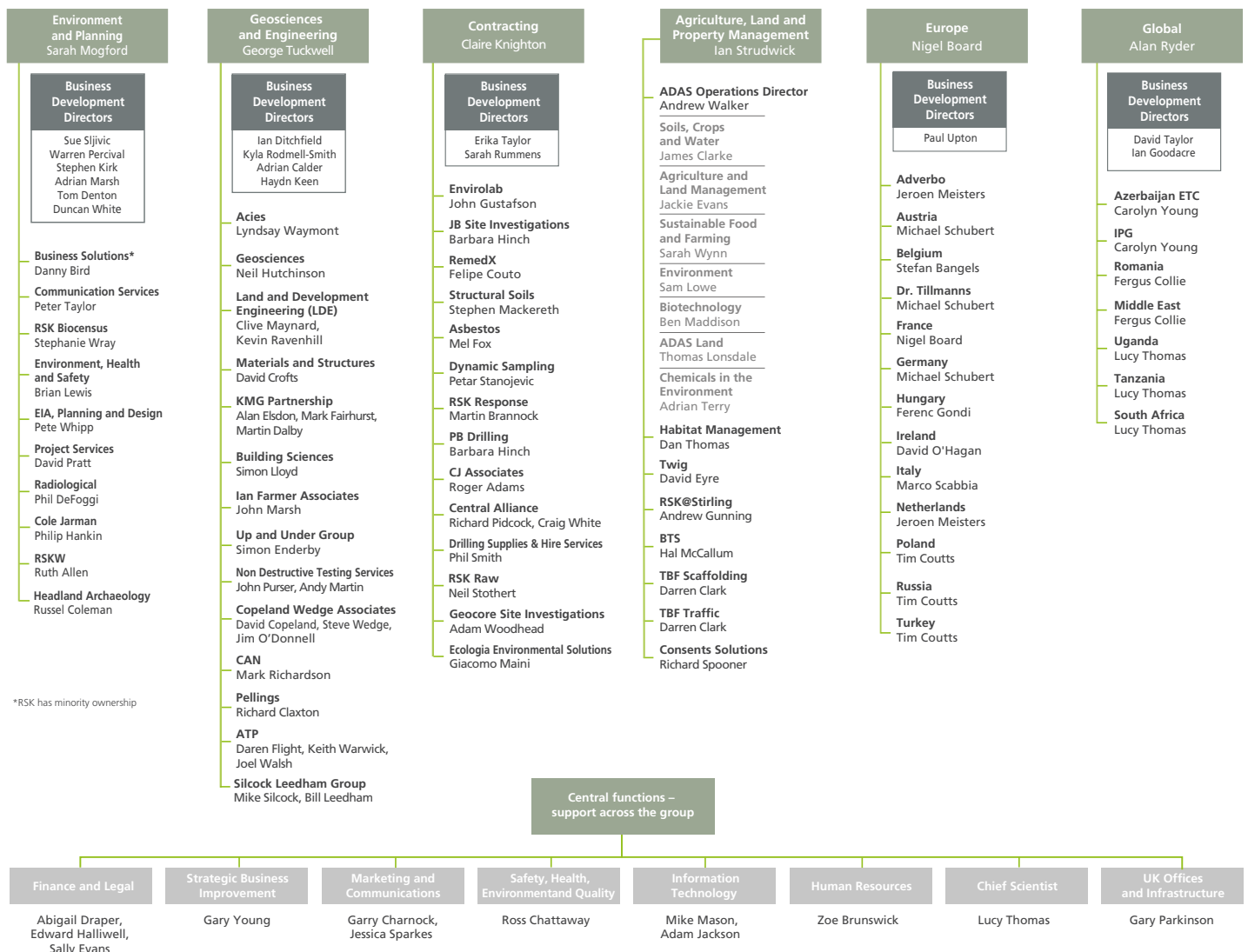
**FY18 REVENUE £146.5 MILLION**

**TOP CLIENTS**



- BP, Chevron, EDF Energy, E.ON, Exxon, National Grid, National Grid Property, Shell, Centrica, DONG, Gaz de France, Magnox, RWE npower, Scottish Power/Iberdrola, SSE, Trans Adriatic Pipeline, Horizon Nuclear Power, UKPN, Total, Cavendish Nuclear, Basrah Gas Company, Bradwell Power Generation
- Alstom, General Electric, Honeywell, Huntsman, Kellogg's, Imperial Tobacco, Kimberly-Clark, Saint Gobain, Unilever, Mott Macdonald, AGFA
- Peel Holdings, Taylor Wimpey, Amey, Balfour Beatty, BAM Nutall, Barratt, Bellway, Galliford Try, Kier, UK Coal/Harworth Estates, Environment Agency, Forestry Commission, Berkeley Homes, Countryside Properties, Gladman Consultants, Redrow Homes
- ABC Electrification, Abu Dhabi Airports, Global Infrastructure Partners, High Speed Two Ltd, Merseylink, Network Rail, SNCF, TAV Airports, Colas Rail
- Bristol City Council, Crown Commercial Service, Defence Infrastructure Organisation, Homes & Communities Agency, Northern Ireland Housing Executive, World Bank, North Ayrshire Council, North Yorkshire County Council
- AHDB, BASF, Dow Agro Sciences, DuPont, FMC, Syngenta, Defra, government-matched funding schemes, Natural England, Welsh Government, Fera Science
- Asda, Sainsbury's, Lush, Lidl, Ikea, Tesco
- Thames Water, Anglian Water, Severn Trent Water/Biffa, United Utilities

# OPERATIONS



## AWARDS

### Certifications and accreditations



### Registrations and memberships

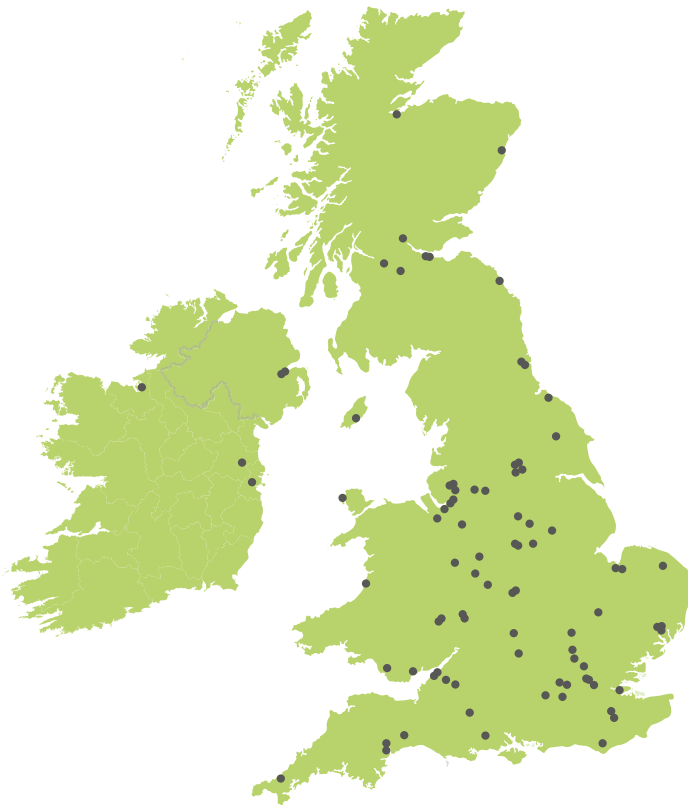


## OVER 90 UK AND IRELAND OFFICE LOCATIONS

### Helsby (head office)

Spring Lodge  
172 Chester Road  
Helsby WA6 0AR  
Tel: +44 (0)1928 726006

Over the past decade, we have been working hard to ensure that we acquire the right companies to enable us to deliver a full range of integrated environmental and engineering consultancy, and technical support services to our clients in the UK and overseas.



Visit [www.rsk.co.uk/item/91-our-offices.html](http://www.rsk.co.uk/item/91-our-offices.html) for a full list of RSK office locations and contact details.

## SHEQMS

RSK places significant emphasis on workplace health and safety; all its activities are managed in accordance with the group safety, health, environment and quality management system (SHEQMS), which is certified to ISO 9001:2015, ISO 14001:2015 and ISO 45001:2018 standards. This commitment to a safety-based operating culture arises from a dedication to ensuring the health and safety of RSK employees and to maintaining clients' health and safety reputations. RSK fully understands and embraces the liability concerns that its clients have regarding the SHEQ performance of their contractors and subcontractors, and how workplace accidents can directly affect both clients and RSK's bottom lines.



## CORPORATE RESPONSIBILITY AND SUSTAINABILITY



Corporate responsibility and sustainability (CR&S) is inherent in every aspect of RSK's operations. We strive to go beyond our statutory obligations to be a good neighbour, care for our stakeholders and minimise our impact on the environment.

RSK has developed a Group Sustainability Route Map, a visual representation of the company's long-term goals and planned actions up to 2025. The route map integrates business and sustainability performance areas into a new holistic strategy.



## CULTURE AND VALUES

Since 1991, our mission has been to provide outstanding consultancy services, from an excellent working environment by being well-motivated, ambitious and enthusiastic professionals.

We seek to deliver on that vision by adhering to nine business principles.

- |  |  |  |
|--|--|--|
|  <b>1</b><br><b>Hiring</b> , retaining and rewarding talented and dedicated people  |  <b>2</b><br><b>Building</b> enduring client relationships                    |  <b>3</b><br><b>Encouraging</b> continuous improvement and innovation       |
|  <b>4</b><br><b>Promoting</b> a learning culture in a positive working environment |  <b>5</b><br><b>Making</b> strategic investments for sustainable growth       |  <b>6</b><br><b>Committing</b> to strong, predictable financial performance |
|  <b>7</b><br><b>Maintaining</b> an unwavering commitment to health and safety       |  <b>8</b><br><b>Promoting</b> the concept of sustainability in all that we do |  <b>9</b><br><b>Encouraging</b> staff consultation and clear communication  |

# INTERNATIONAL LOCATIONS

DRIVEN BY KEY UK CUSTOMERS WITH OPERATIONS OVERSEAS,  
WE HAVE BUILT UP A NETWORK OF INTERNATIONAL OFFICES  
ACROSS CONTINENTAL EUROPE, THE MIDDLE EAST AND AFRICA.



INCLUDES PARTNER OFFICES

Visit [www.rsk.co.uk/item/91-our-offices.html](http://www.rsk.co.uk/item/91-our-offices.html)  
for a full list of RSK office locations and contact details.